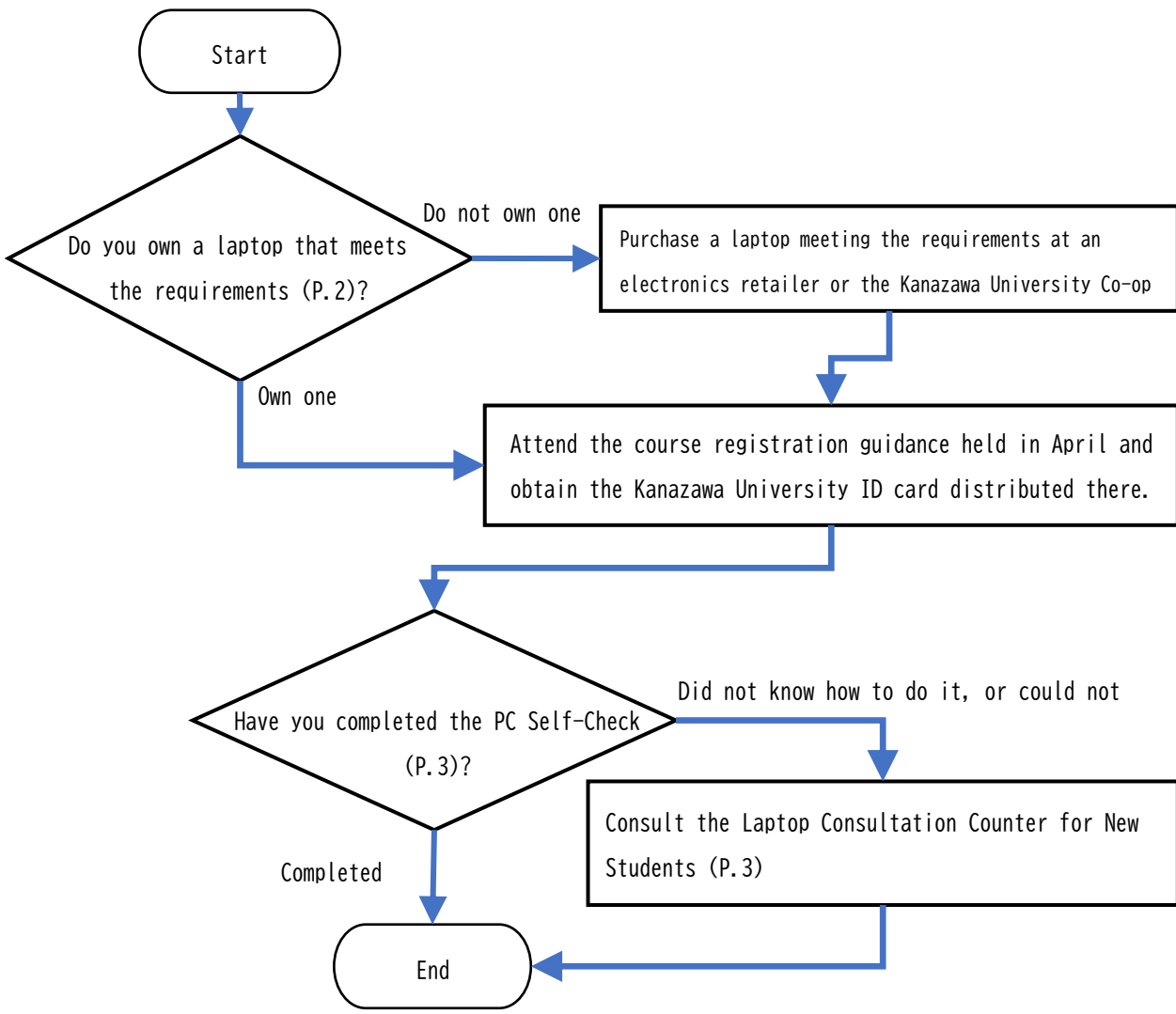


# 1. [Required for All New Students] Preparing Your Laptop

Overview: Kanazawa University conducts most student-related communication and procedures online. By logging into the portal site, students can access information that is essential to campus life, including course registration, communication with instructors, self-study using e-learning materials, report submissions, grade checks, health examination results, and support for further education and employment. Laptops are also used in classes. After learning the use of computers for university purposes in the first-year first-quarter university-wide required course “Fundamentals of Data Science,” you will use your laptop throughout your four-year undergraduate program, including for writing your graduation thesis. Therefore, other than special circumstances, please keep a laptop ready before enrollment.



[Laptop Setup Process] Please ready your laptop as per the flowchart given below, referring to subsequent pages as required.



### 2. Specifications for Laptops to be Ready Before Enrollment

Overview: A laptop that satisfies the following specifications should be kept ready. If you find it difficult to determine compliance on your own, you may print this document and present it to the staff of the electronics retailers. Additionally, the Kanazawa University Co-op sells laptops that meet these requirements. If you already own a laptop that meets these requirements, you need not purchase a new one.

#### 1. Basic Configuration (See 3-I):

1-I. Storage (such as Hard Disk and SSD): 256 GB or more

1-II. Memory: 8 GB or more

\* 16 GB recommended

1-III. OS: Windows or macOS

\* For Windows: Version must be Windows 11.

\* For macOS: Version must be macOS Tahoe or later

\* OS such as iPadOS/Android OS/Chrome OS are not acceptable.

1-IV. Device must support online lectures. (It should be equipped with wireless LAN, camera, and microphone)

#### 2. Software and Additional Features (See 3- I):

2-I. Microsoft 365 (Word/PowerPoint/Excel) must be installed (See 3- II)

2-II. A physical keyboard (not an on-screen keyboard) must be present.

#### 3. Important Notes:

3-I. The laptop must meet the supplementary requirements for each academic program. (See P.4)

3-II. During enrollment, the university provides a free Microsoft 365 license. Note that many commercially available laptops are preinstalled with Microsoft 365 or Microsoft Office, which may increase their prices.

3-III. If you prepare or purchase a laptop with different specifications, consult the New Student PC Help Desk (see P.3).

3-IV. Laptops with expired support are prohibited from connecting to the campus network. Therefore, you must have a laptop running an OS that meets the requirements in “1. Basic Configuration”.

3-V. If getting a laptop is difficult owing to financial circumstances, laptops may be loaned, only to those student who have applied for admission fee reduction (deferral) or tuition fee reduction. For details, please refer to the following link:

[https://www.kanazawa-u.ac.jp/students/economic/exemption\\_grace#notepc](https://www.kanazawa-u.ac.jp/students/economic/exemption_grace#notepc)



Lending of Notebook PCs

## Notice to Prospective Students for the 2026 Academic Year at Kanazawa University

### 3. PC Self-Check

Overview: Access the PC Self-Check Special Site (see URL below and QR code at the bottom right). Click on the PC Self-Check (Windows 11) tab (see URL below) and follow the instructions to configure your laptop. If you encounter difficulties, feel free to use the New Student PC Help Desk (see the URL below). When visiting the Help Desk, please print the PC Self-Check Checklist PDF (distributed during the Course Registration Guidance) and bring the completed form detailing your setup status. If you do not have an internet connection at home, you may use the AprilOnly WiFi (see URL below) available only during April at the General Education Lecture Hall and the Emerging Media Initiative. Please refer to the [Various Schedules] below for the schedule.

PC Self-Check Special Site (Includes PC Help Desk for New Students):

PC Self-Check (Windows 11) Tab:

<https://www.kains.kanazawa-u.ac.jp/pc-startup/win11/>

\* For macOS users: Please read the corresponding instructions.

AprilOnly WiFi:

<https://www.kains.kanazawa-u.ac.jp/aprilonly/>



PC Self-Check



AprilOnly (WiFi)

#### 【Various Schedules】

University events are marked with , and tasks for new students are marked with .

<Schedule until Late March > :

- Announcement of Kanazawa University Admission Results (typically in early March)
- Distribution of the document “Notice for Prospective Kanazawa University Students” to the admitted students
- Obtain a laptop computer according to the requirements (P.2).
- PC Self-Check: Complete Items 1 through 5.
  - \* Items 6 and beyond require your Kanazawa University ID card (distributed at the Course Registration Guidance)

<Schedule After April > :

- Course Registration Guidance (typically around April 1): Kanazawa University ID cards are distributed.
- PC Self-Check: Complete items 6–10
  - \* Strongly recommended to complete items 11-1 and 11-2
- Faculty Orientation

### 4. Supplementary Information for Each School

[School of Entrepreneurial and Innovation Studies, School of Tourism Sciences and Design, School of Smart Technology and Innovation, School of Law, School of Teacher Education, School of International Studies, School of Medicine, School of Pharmacy, School of Medical and Pharmaceutical Sciences, School of Health Sciences] The classes for “Introduction to Data Science” (First-Year Course) are Windows-based. MacOS users must adapt independently to all materials and instructions.

[School of Regional Development Studies] Users of macOS-equipped computers should either set up a dual-boot environment with Windows using BootCamp or install Windows in a virtual environment (application type is irrelevant) to enable the use of Windows applications beforehand. If you are considering purchasing a new computer rather than "original PC", we recommend buying a Windows-based computer, since current macOS-equipped computers (such as Apple M1 chip models) have extremely low compatibility with Windows.

[School of Chemistry] The class of “Computer Exercise in Molecular Orbital Method” in Green Sustainable Chemistry Program, an Advanced Program for third-year students, requires softwares running on Windows, but may not on Macintosh computers. In the class, you can use university-provided Windows computers in face-to-face classes. In online classes, however, you will have to arrange Windows computers by yourselves.

[School of Mechanical Engineering] We will conduct practical exercises using SOLIDWORKS 2023 software, which is supported only on Windows operating systems running on Intel or AMD processors. Each student must have a laptop (notebook) computer that meets the following requirements: Operating System: Windows 11 (64-bit), CPU: Intel or AMD processor, Memory (RAM): at least 16 GB of RAM, Storage: 256 GB or more (recommended). Laptops running macOS on Apple Silicon (e.g., M1/M2/M3) or other ARM-based CPUs are not recommended, because compatibility with Windows is extremely limited and SOLIDWORKS is unlikely to run on ARM systems. Students who plan to purchase a new device should select a Windows laptop that meets these specifications.

["Core Program for Electronic, Information, and Mechanical Systems Engineering" and "Core Program for Human and Mechanical Systems Engineering" in School of Frontier Engineering] We will conduct practical exercises using SOLIDWORKS 2023, a software application that runs only on Windows operating systems with Intel or AMD CPUs. Please prepare a computer that meets the following requirements: Operating System: Windows 11 (64-bit), CPU: Intel or AMD processor, Memory (RAM): 16 GB or more (recommended), Storage: 256 GB or more (recommended). Please note that current macOS computers with Apple Silicon (M3/M4/M5 chips, etc.) have extremely limited Windows compatibility, and SOLIDWORKS is highly unlikely to run on ARM-based CPUs. If you are considering purchasing a new

## **Notice to Prospective Students for the 2026 Academic Year at Kanazawa University**

computer, we strongly recommend a Windows PC that meets the above specifications.

[School of Electrical, Information, and Communication Engineering] You can connect to the department's computer system both on and off campus to review programming exercises and study independently. For this purpose, a computer equipped with features that support screen transmission (such as video playback support) is highly beneficial. We recommend using a PC with a CPU that includes Intel HD Graphics 2000 (released in 2011 or later) or an AMD APU. The original PC model meets these recommended specifications. Additionally, to ensure smooth operation during exercises, we recommend using a PC with at least 16GB of memory.

[School of General Education (Humanities, Sciences)] Please check for any additional requirements set by the school you wish to select in your second year.